

# FIREScan



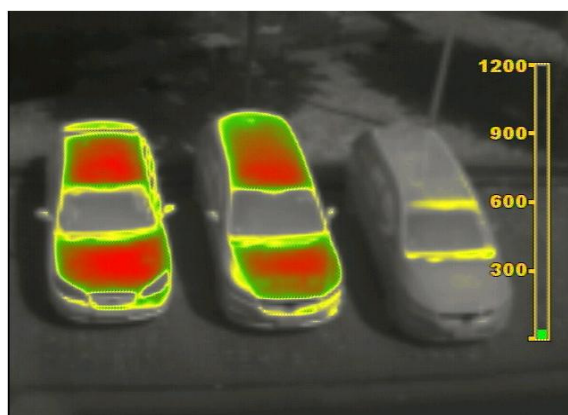
## DESCRIPTION:

The Mtech FIREScan has been specifically designed and built to withstand high operating temperatures of up to 260°C.

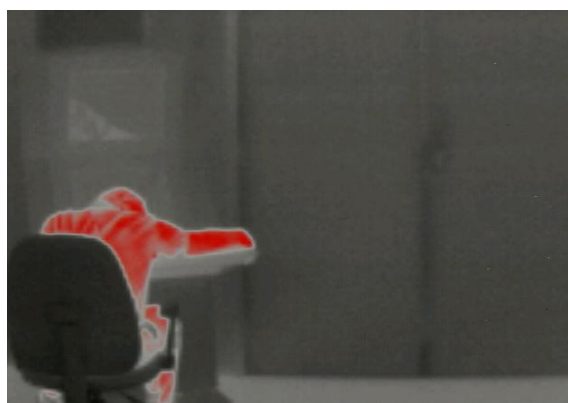
Industrial CCTVs are designed for temperatures of up to 50°C. When there is the need for surveillance at higher temperatures, the FIREScan is the perfect solution. Coupled with the innate ability to see through dust, smoke and in total darkness, FIREScan will provide you with the most comprehensive yet cost-effective high temperature thermal imaging surveillance system.



Besides being used as a high temperature monitoring camera, the FIREScan can also serve as a security camera. Incorporating a proven thermal imaging sensor as well as its lightweight, compact and weather-proof housing, the FIREScan can be used in various ways under all weather conditions.



## Surveillance



## Locating Victims

**Part Numbers:**

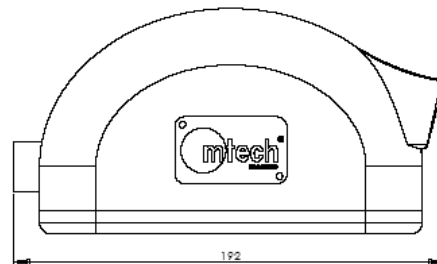
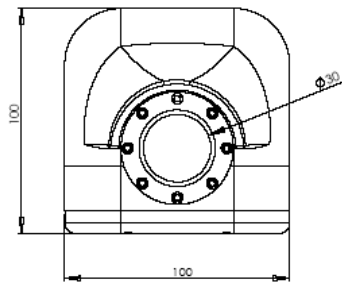
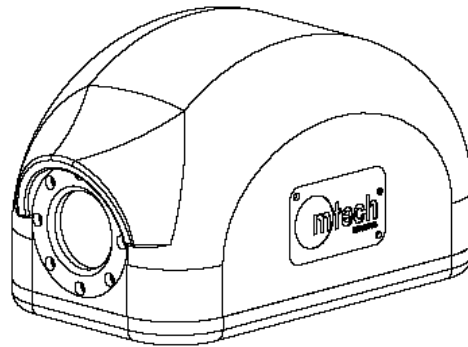
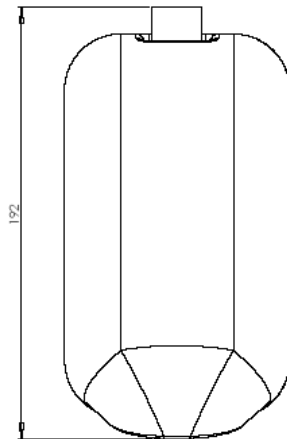
Mtech FIREScan:

MTFS-320



**MTFS-320 System Specifications**

Detector	Type	Amorphous Silicon Microbolometer (320 x 240 pixel array)
	Spectral Range	7-14 microns
	Sensitivity	<50 mK
	Analog Video Output	PAL/NTSC
Environmental	Operating Temp	-20°C to +260°C
	Storage Temp	-40°C to +90°C
	Operating Voltage	+ 12 VDC
Physical	Housing	IP67 Ready, Heat Tested
	Dimension	180 x 100 x 100 mm
	Weight	2.4kg (including detector)
	Field of View	50° x 37.5°



**Authorized Dealer**



**Mtech Imaging Pte Ltd**  
57 Changi North Crescent Singapore 499629  
Tel: +65 6572 5699 Fax: +65 6572 5680  
Website: <http://www.mtech-imaging.com>  
Email: [sales@mtech-imaging.com](mailto:sales@mtech-imaging.com)