

# FeverScan S3000



## **DESCRIPTION:**

The Mtech FeverScan fever screening system was first developed and fully validated during the 2003 SARS crisis.

Mtech is now delivering the improved S3000 series to customers whose crucial requirement is to prevent the spread of infectious viruses where fever is one of the symptoms. With the evolving threat of Avian flu and H1NA pandemic looming, equipping your organization with a high performance fever detection system has become necessary.

The Mtech FeverScan S3000 fever screening system is ideal for deployment in various public and commercial facilities such as: Airports, Border Checkpoints, Train Stations, Convention Centers, Public Buildings, Education Centers and Industrial Complexes.

### **Benefits of the Mtech FeverScan S3000 system**

#### **High Resolution**

System can achieve a resolution of up to 0.1°C (SPRING Singapore Technical Reference TR15 Part 1).

#### **Fast and Non-intrusive Operation**

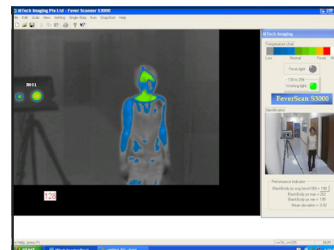
No disruption to human traffic as screening is real-time, allowing for mass screening as they walk through without stopping.

#### **Easy Setup**

FeverScan S3000 is designed for rapid set up and relocation. Operators can be trained in the setting up and operation of the system in less than half a day.

#### **Easy Identification**

FeverScan S3000 series system is easy to operate and designed to provide fast and effective identification of fever cases as they walk through. The system incorporates a 'live' video feed into the same LCD screen, showing both thermal and visual videos. This allows the operator to identify the fever case by comparing both thermal images and visual images on screen simultaneously. The operators are also alerted through visual and audio alarms.



Our team of well-trained and experienced technical personnel is also available to provide comprehensive technical assistance during deployment and operation. All maintenance and calibration services of the system are available in Mtech

With Mtech FeverScan S3000 systems, you can now truly achieve peace of mind.

**Part Numbers:**

FeverScan S3000:

FVS3000

**Specifications**

<b>IMAGING PERFORMANCE</b>	
<b>Thermal (IR) Camera</b>	
Detector Type	Uncooled IR Focal Plane Array
Spectral Response	7 to 14 $\mu\text{m}$
Field of View	25° x 19°
Thermal Sensitivity	<50mK
Optics Lens	18mm
Minimum Focus Distance	0.5m
Temperature Resolution	0.1°C (compliant to SPRING TR15 Part 1)
<b>Visual Camera</b>	
Output Video	CCD, Digital and Colour Video (incorporated on same screen)
<b>TEMPERATURE REFERENCE SOURCE</b>	
Black Body	Accuracy of $\pm 0.5^\circ\text{C}$ , Stability of $\pm 0.1^\circ\text{C}$
<b>IMAGE STORAGE</b>	
Thermal and Visual images	Standard Bitmap image (including recording feature)
<b>SYSTEM PERFORMANCE INDICATOR</b>	
LCD Display	Displays both IR and CCD videos real time and monitors stability status of the operating system
<b>DETECTION INDICATOR</b>	
LCD Display	Visual Alarm (incorporated on same screen)
Speaker	Audible Alarm
<b>POWER</b>	
CPU	230VAC
IR & CCD Camera	AC to DC
CCD Camera	AC to DC
Temperature Reference Source	AC
<b>ENVIRONMENTAL</b>	
Operating Temperature	-20°C to +50°C
Storage Temperature	-40°C to +80°C
<b>STANDARD EQUIPMENT</b>	
External Temperature Reference Source	
Camera System (encased in metallic housing for protection)	
Control System (CPU configured with imaging software and ready for use)	
Mobile Console and Storage System	
External Temperature Reference Source Stand	

**Authorized Dealer**

**Mtech Imaging Pte Ltd**  
 57 Changi North Crescent Singapore 499629  
 Tel: +65 6572 5699 Fax: +65 6572 5680  
 Website: <http://www.mtech-imaging.com>  
 Email: [sales@mtech-imaging.com](mailto:sales@mtech-imaging.com)